

PRINCIPAL PARTICULARS

LOA	280'-0" (85.34m)
BREADTH	60'-0" (18.29m)
DEPTH	24'-0" (7.32m)
DRAFT (LOADLINE)	19'-3" (5.87m)
CLEAR DECK CARGO SPACE	201' X 50.5' (61.27m X 15.40m)
CLEAR DECK CARGO AREA	10,151 ft ² (943 m ²)
CARGO DECK RATING	1,200 lb/ft ² (6 MT/m ²)
MAIN PROPULSION	(2) X 3608 CATERPILLAR, 3,299 BHP @ 1,000 RPM EACH
BOW THRUSTER-TUNNEL	1 X 1,700 HP SCHOTTELL FPP TUNNEL
BOW THRUSTER-SWING	1 X 1,200 HP ROLLS ROYCE TCNS 73/50 SWING UP (3508 CAT)
STERN THRUSTER-TUNNEL	1 X 1,700 HP SCHOTTELL FPP TUNNEL
SHIPS SERVICE DIESEL GENERATOR	2 X 910 kW (3508B CAT)
SHAFT GENERATOR FOR ELECTRIC THRUSTERS	2 X 2 mW (KATO)
EMERGENCY DIESEL GENERATOR	1 X 175 kw (JOHN DEERE 6081AFM75)

ACCOMMODATIONS

2P CREW STATEROOMS	8
4P CREW STATEROOMS	3
1P CREW STATEROOMS	1
TOTAL BERTHING:	29

REGULATORY

SOLAS 2002, USCG SUBCHAPTER I & L, USCG MINIMALLY MANNED ENGINE ROOM, USCG OIL RECOVERY VESSEL AUTHORIZATION (20% DWT)
ABS LOADLINE, A1, AMS, ACC, DPS-2, ACP, OSR-C2

D

C

B

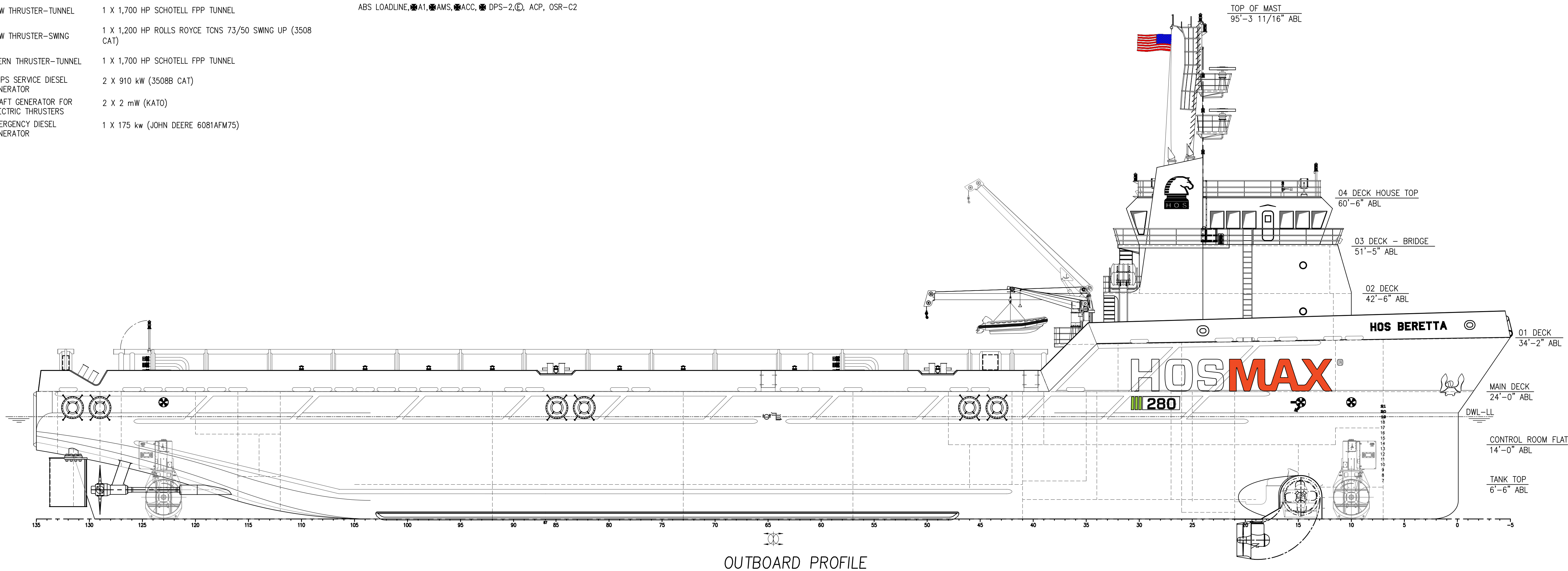
A

D

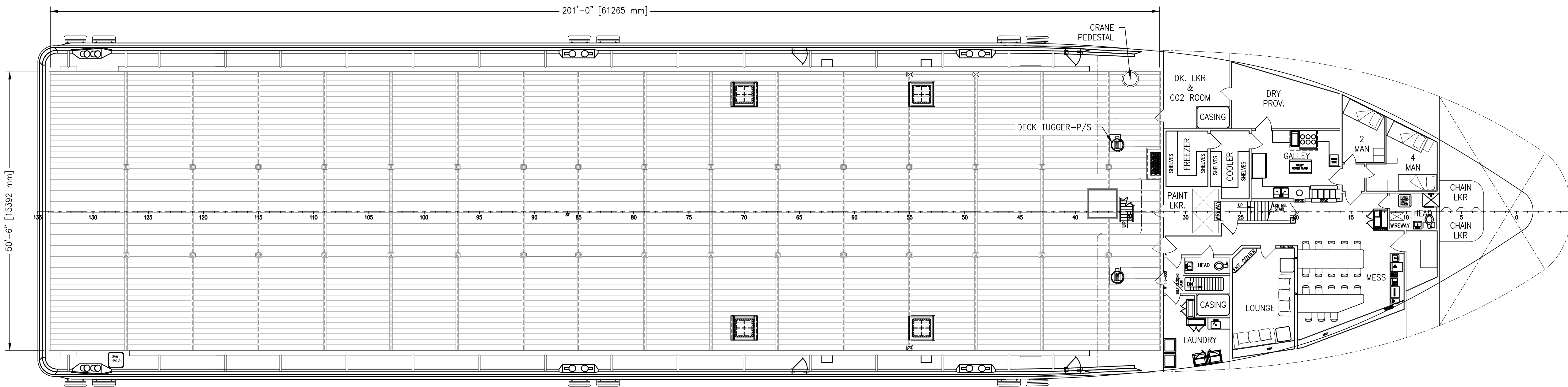
C

B

A

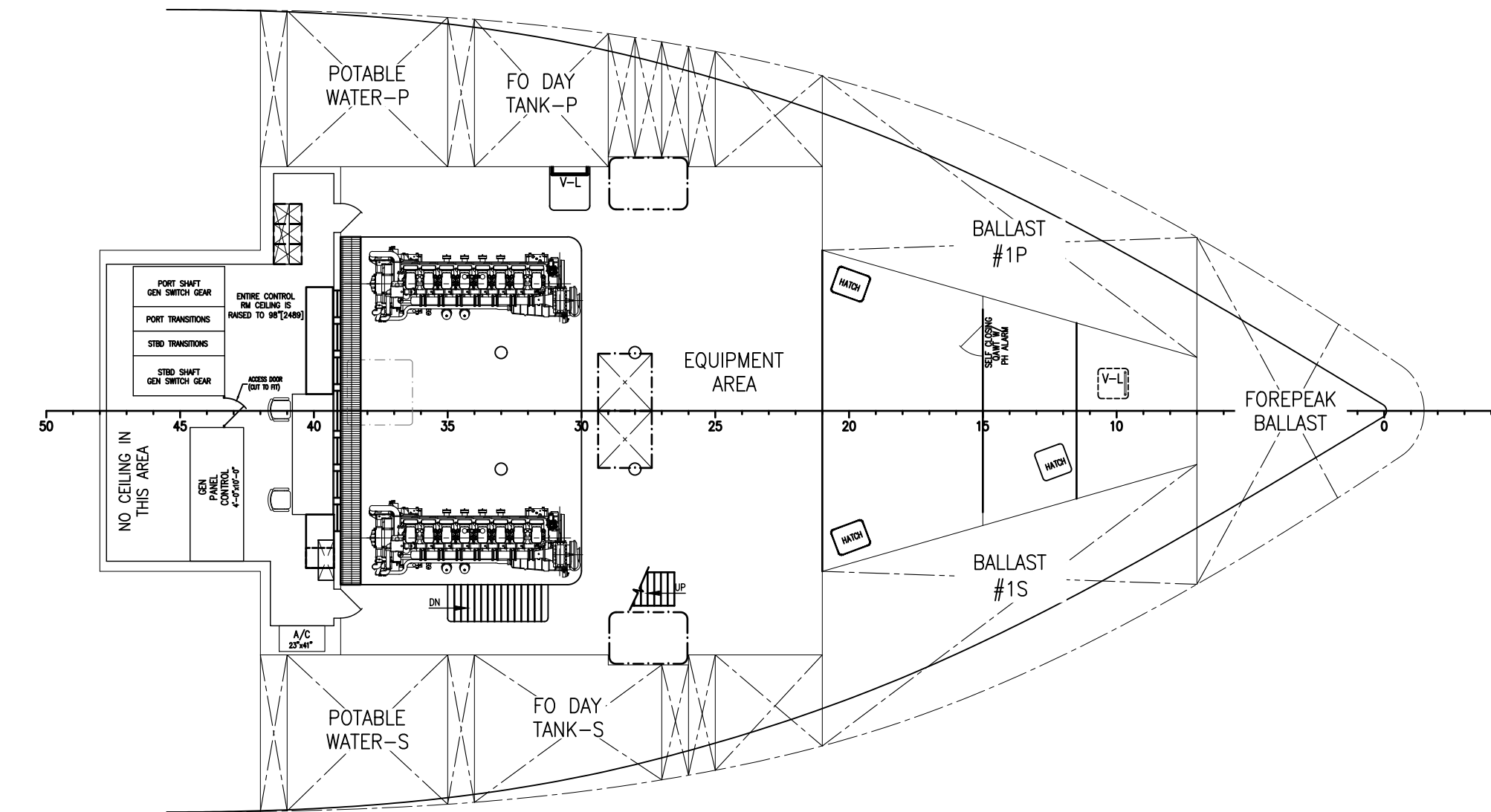


OUTBOARD PROFILE
STBD SIDE SHOWN, LKG PORT

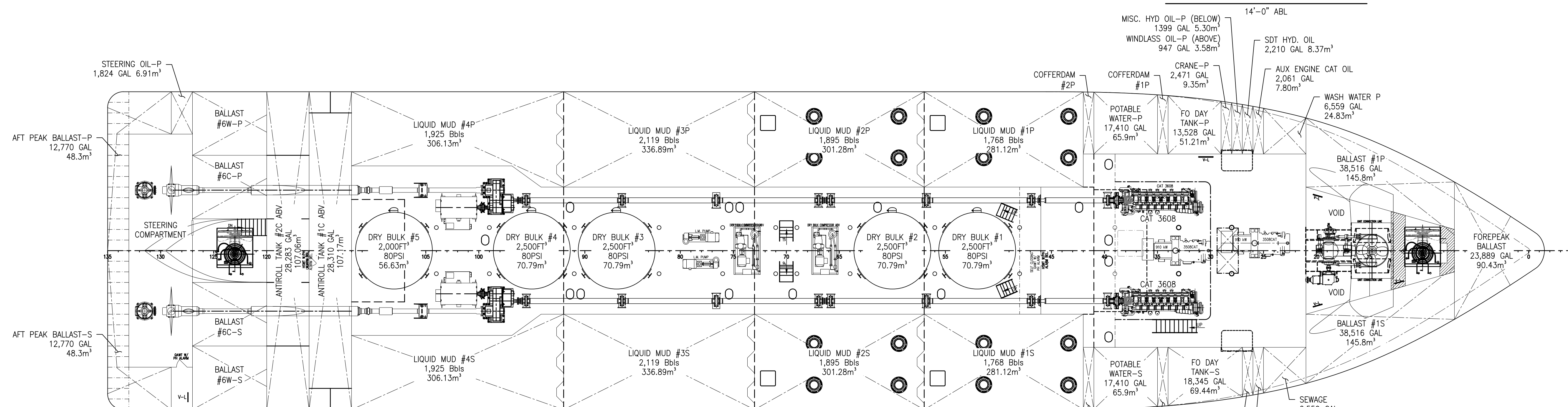


MAIN DECK PLAN
24'-0" ABL

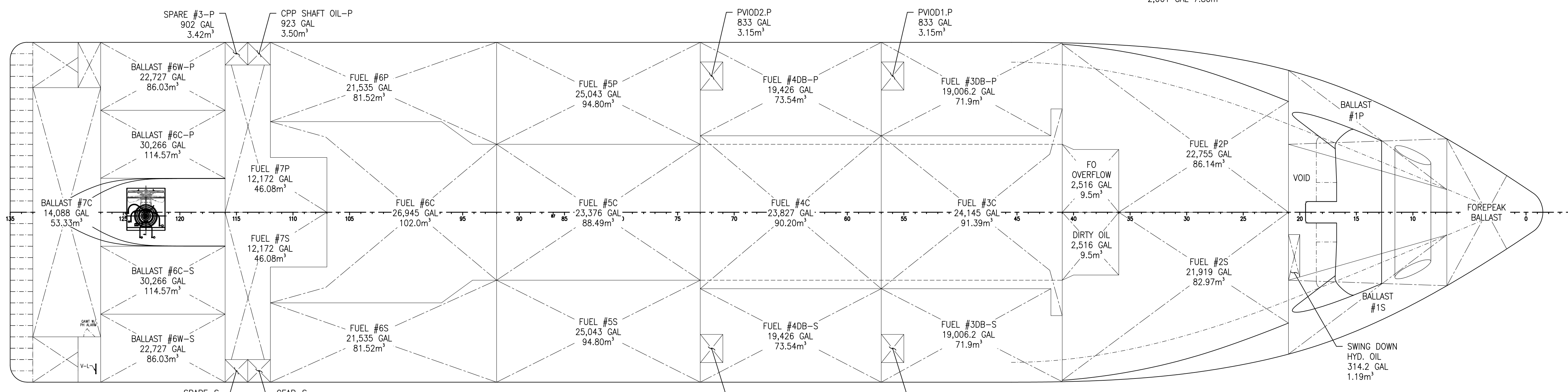
HOSMAX 280 / HOS BERETTA	
THIS DRAWING, DESIGN CONCEPT AND SPECIFICATIONS ARE THE PROPERTY OF HORNBECK OFFSHORE SERVICES AND ARE FURNISHED ON A CONFIDENTIAL BASIS WITH AN EXPRESSED UNDERSTANDING THAT THEY WILL NOT BE COPIED IN ANY MANNER USED FOR MANUFACTURE, SOLD, TRANSFERRED, NOR USED TO THE DETRIMENT OF SAID FROM WITHOUT WRITTEN PERMISSION. 1008 ©	
HORNBECK OFFSHORE SERVICES	
DRAWN BY: E. GRISHMAN	280'-0" X 60'-0" X 24'-0"
CHECKED BY: M. STANSBURY	OUTBOARD PROFILE & GENERAL ARRANGEMENT
APPROVED BY: J. GUIDRY	TASK No.: 7582 DRAWING No.: 1.001 SCALE: 3/32" = 1'-0" DATE: 05/22/23 HULL No: 227 SY: NAS SHEET 1 OF 3
REV. 1	
LAST SAVE/PRINT: 1/30/2024 8:52 AM ENS: JSULLIVA SHEET: ANS I 22X34	



CONTROL ROOM FLAT PLAN

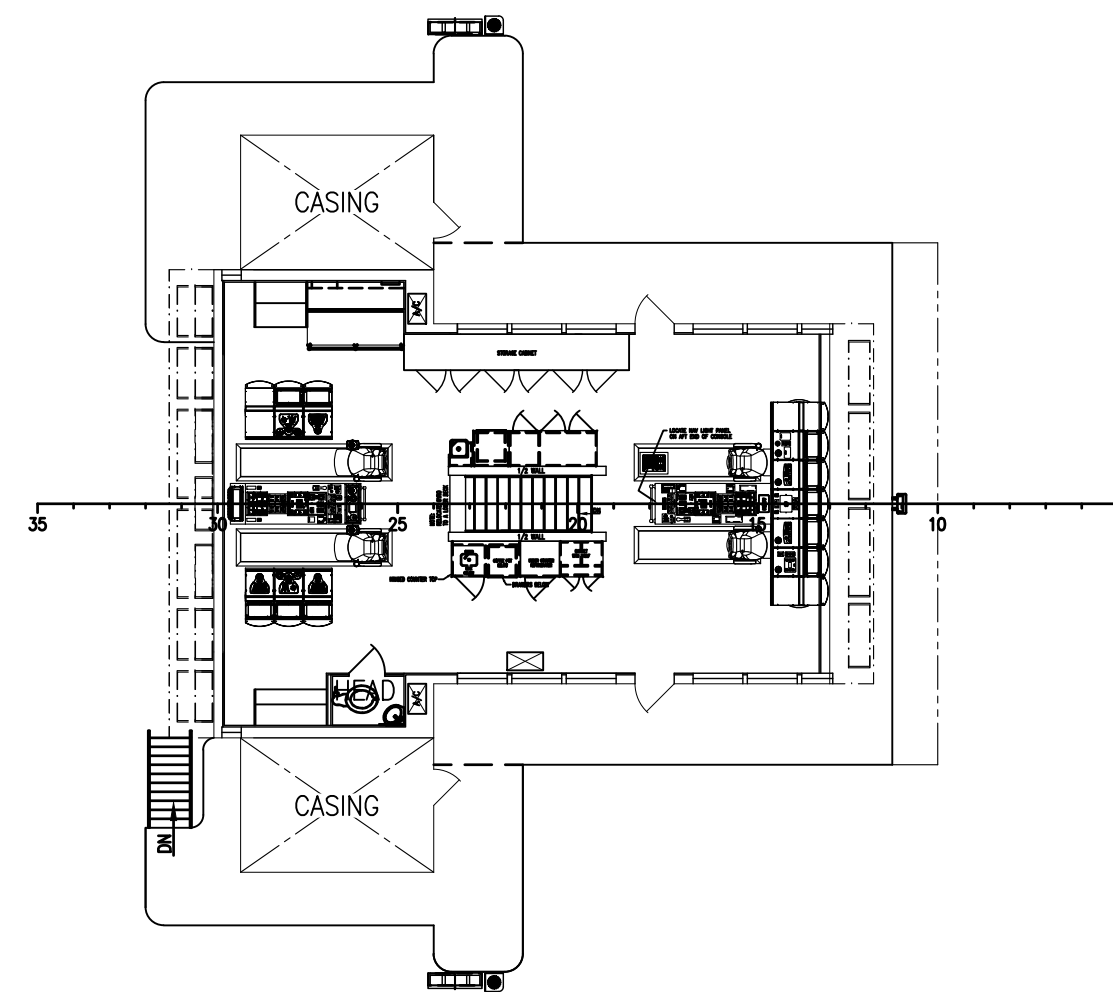


TANK TOP PLAN

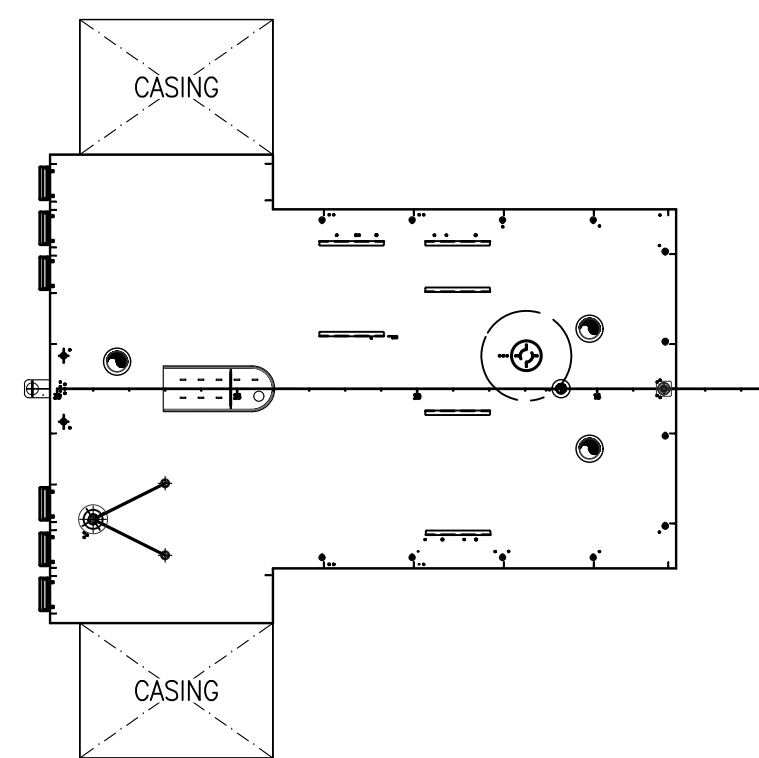


BELOW TANK TOP PLAN

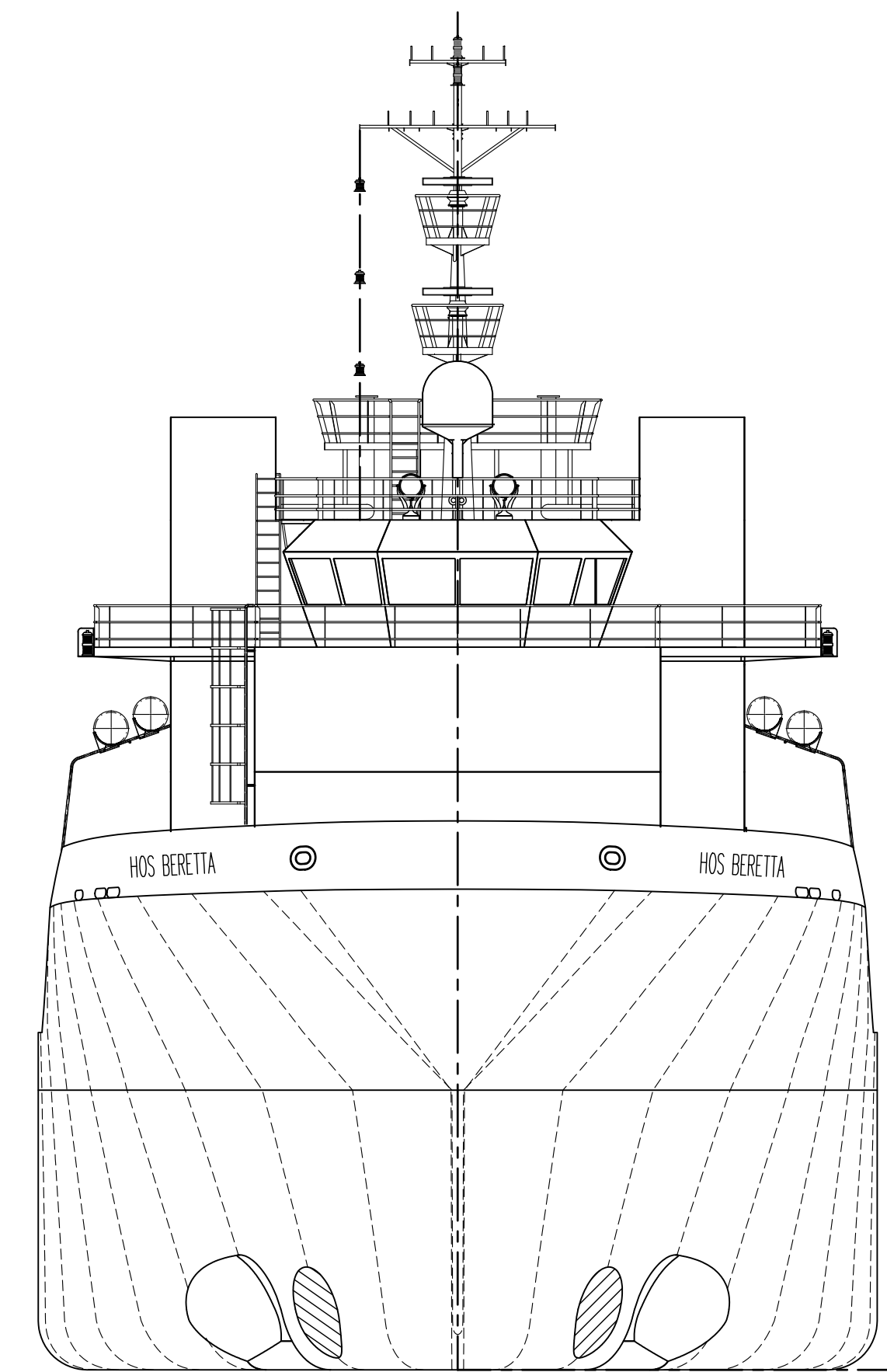
	THIS DRAWING, DESIGN CONCEPT AND SPECIFICATIONS ARE THE PROPERTY OF HORNBECK OFFSHORE SERVICES AND ARE FURNISHED ON A CONFIDENTIAL BASIS WITH AN EXPRESSED UNDERSTANDING THAT THEY WILL NOT BE COPIED IN ANY MANNER USED FOR MANUFACTURE, SOLD, TRANSFERRED, NOR USED TO THE DETRIMENT OF SAID FIRM WITHOUT WRITTEN PERMISSION.			SIZE D
	OUTBOARD PROFILE & GENERAL ARRANGEMENT			REV. 1
	TASK No. 7582	DRAWING No. 1.001	SCALE: 3/32" = 1'-0" DATE: 05/22/23	SHEET 2 OF 3
	HORNBECK OFFSHORE SERVICES			SY: NAS



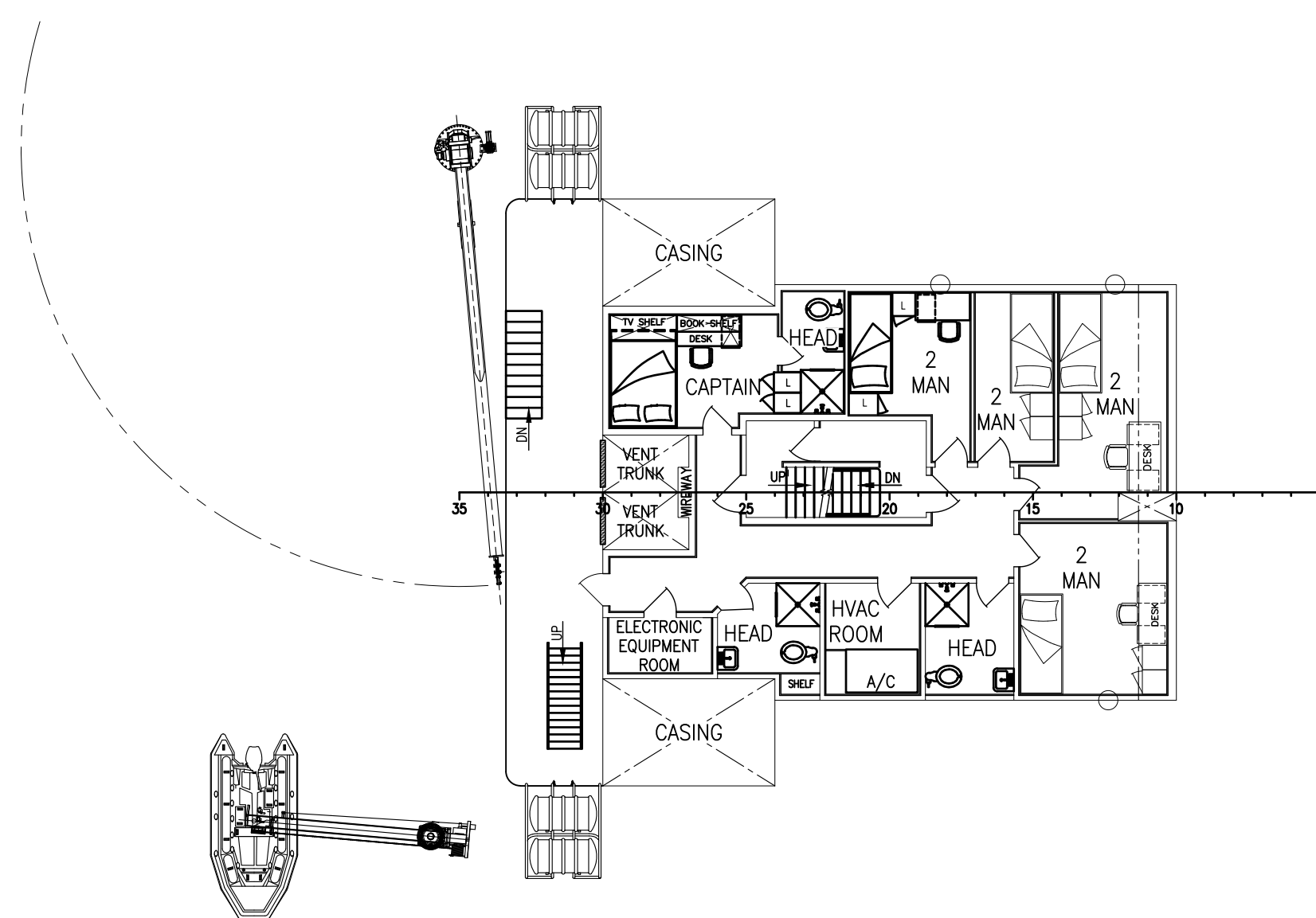
03 DECK – BRIDGE PLAN
51'-5" ABL



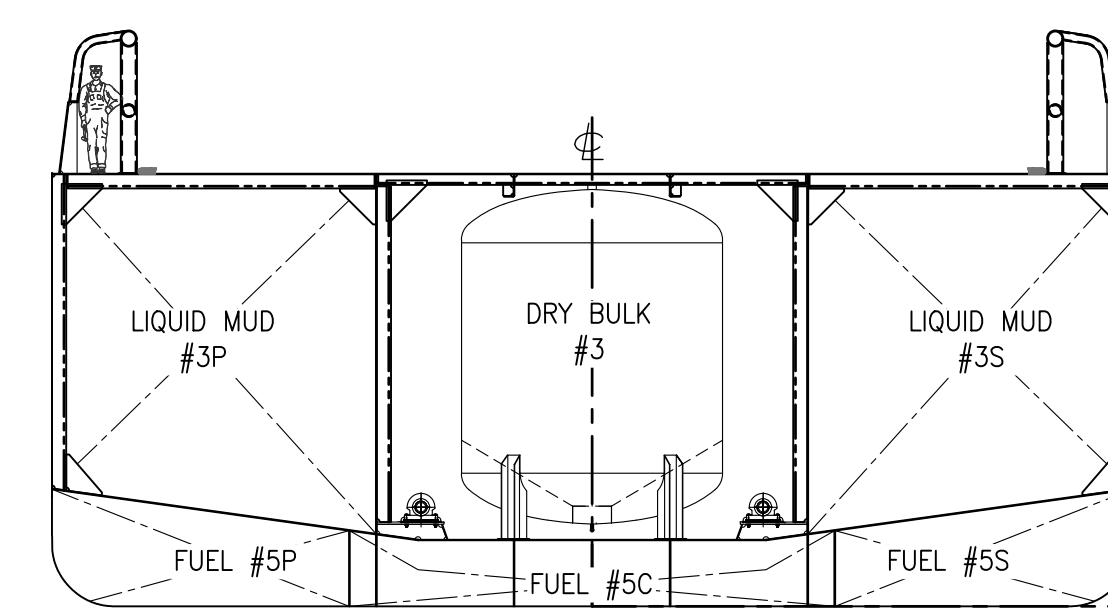
04 DECK – PILOT HOUSE TOP PLAN
60'-6" ABL



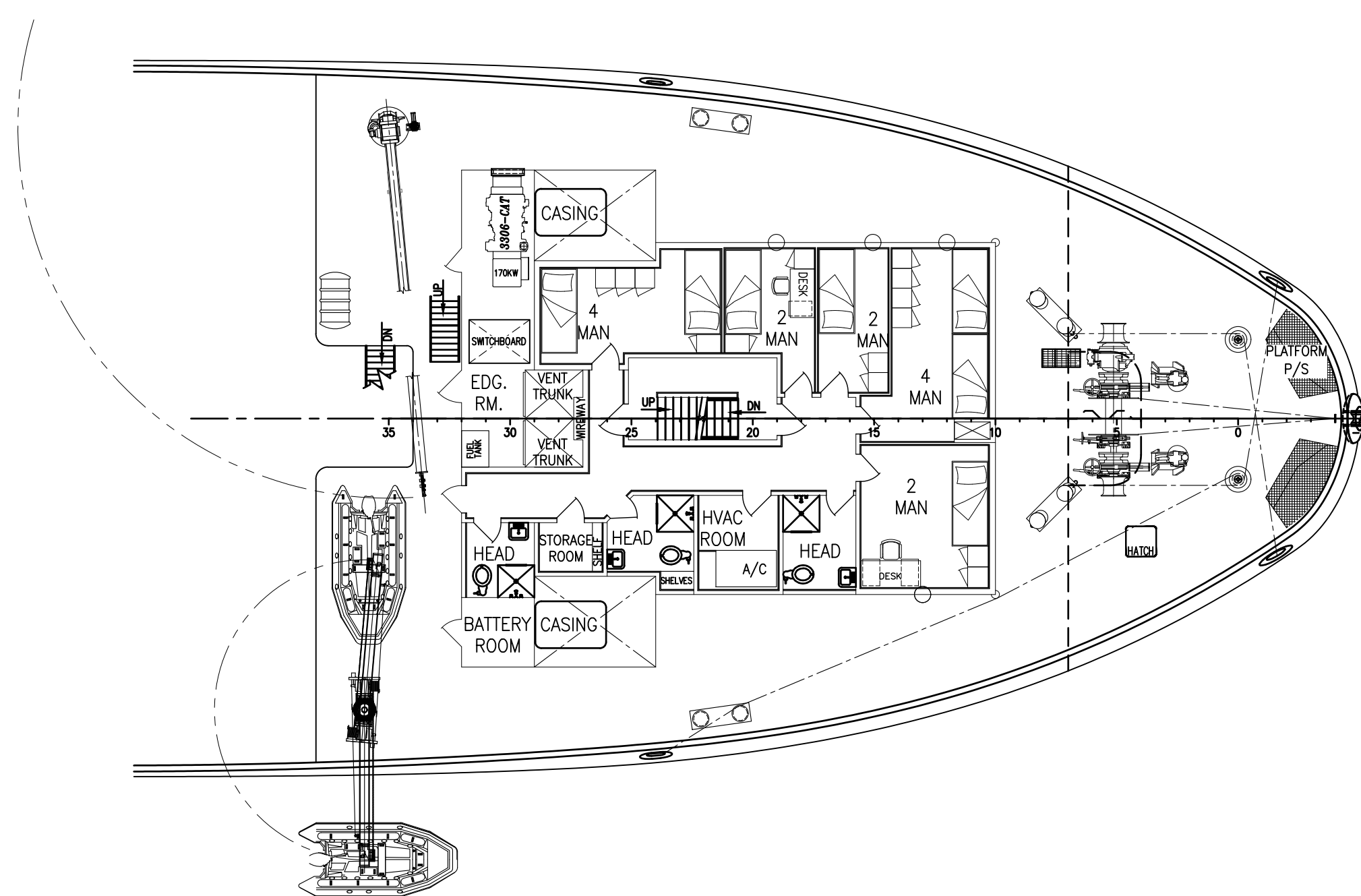
FRONT VIEW
BOW SHOWN, LKG AFT



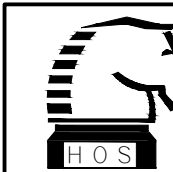
02 DECK PLAN
42'-6" ABL



CARGO SECTION
FR85 LKG FWD



01 DECK PLAN
34'-2" ABL

	<small>THIS DRAWING, DESIGN CONCEPT AND SPECIFICATIONS ARE THE PROPERTY OF HORNBECK OFFSHORE SERVICES AND ARE FURNISHED ON A CONFIDENTIAL BASIS WITH AN EXPRESSED UNDERSTANDING THAT THEY WILL NOT BE COPIED IN ANY MANNER USED FOR MANUFACTURE, SOLD, TRANSFERRED, NOR USED TO THE DETRIMENT OF SAID FIRM WITHOUT WRITTEN PERMISSION.</small>			OUTBOARD PROFILE & GENERAL ARRANGEMENT TASK No. 7582 HULL No. 227	DRAWING No. 1.001 SY: NAS	SCALE: 3/32" = 1'-0" DATE: 05/22/23 SHEET 3 OF 3	SIZE D
	HORNBECK OFFSHORE SERVICES	REV. 1					