

**GENERAL NOTES**

1. THE VESSEL SHALL BE DESIGNED AND CONSTRUCTED IN FULL COMPLIANCE WITH THE 2011 AMERICAN BUREAU OF SHIPPING (ABS) RULES FOR BUILDING AND CLASSING STEEL VESSELS UNDER 90 METERS LENGTH. THE VESSEL SHALL RECEIVE CLASSIFICATION SYMBOLS: ABS, \*A1, \*AMS, \*ACCU, \*DPS-2 NOTATION, \*A1, FFV CLASS 1, OFFSHORE SUPPORT VESSEL, OSR-C2, ©, CRC, UWILD.

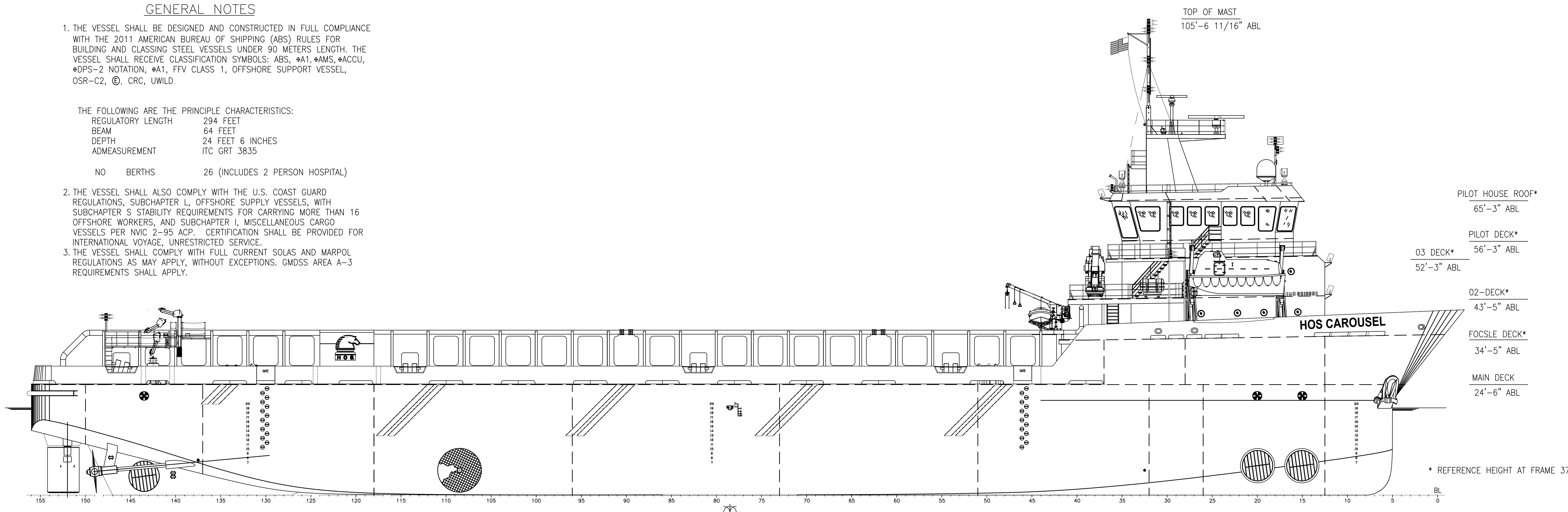
THE FOLLOWING ARE THE PRINCIPLE CHARACTERISTICS:

REGULATORY LENGTH 294 FEET  
 BEAM 64 FEET  
 DEPTH 24 FEET 6 INCHES  
 ADMESUREMENT ITC GRT 3835

NO BERTHS 26 (INCLUDES 2 PERSON HOSPITAL)

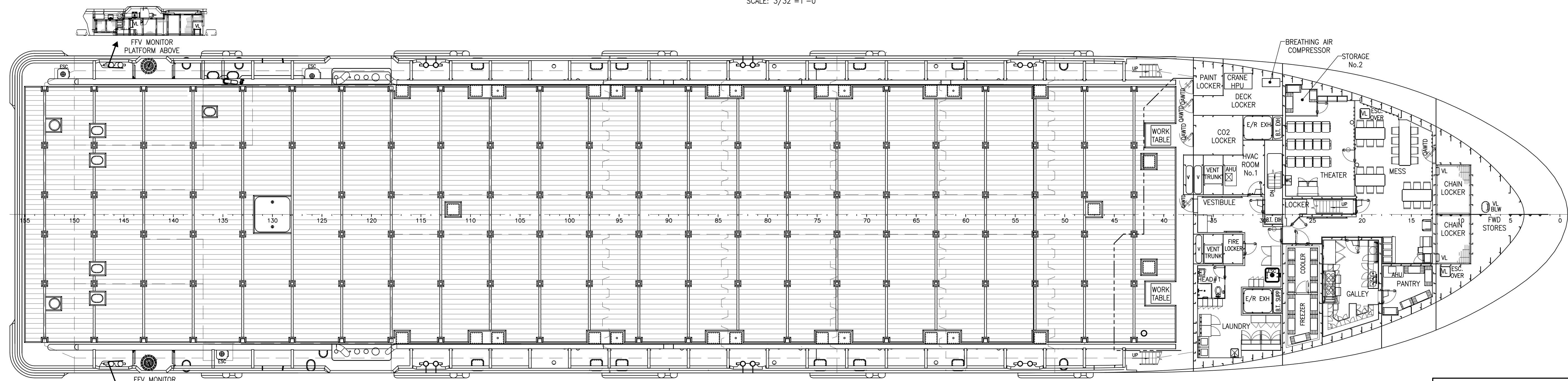
2. THE VESSEL SHALL ALSO COMPLY WITH THE U.S. COAST GUARD REGULATIONS, SUBCHAPTER L, OFFSHORE SUPPLY VESSELS, WITH SUBCHAPTER S STABILITY REQUIREMENTS FOR CARRYING MORE THAN 16 OFFSHORE WORKERS, AND SUBCHAPTER I, MISCELLANEOUS CARGO VESSELS PER NVIC 2-95 ACP. CERTIFICATION SHALL BE PROVIDED FOR INTERNATIONAL VOYAGE, UNRESTRICTED SERVICE.

3. THE VESSEL SHALL COMPLY WITH FULL CURRENT SOLAS AND MARPOL REGULATIONS AS MAY APPLY, WITHOUT EXCEPTIONS. GMDSS AREA A-3 REQUIREMENTS SHALL APPLY.



**OUTBOARD PROFILE**

SCALE: 3/32"=1'-0"



**MAIN DECK**

SCALE: 3/32"=1'-0"

PILOT HOUSE ROOF\*  
65'-3" ABL

PILOT DECK\*  
56'-3" ABL

03 DECK\*  
52'-3" ABL

02-DECK\*  
43'-5" ABL

FOCSLE DECK\*  
34'-5" ABL

MAIN DECK  
24'-6" ABL

\* REFERENCE HEIGHT AT FRAME 37

**HOSMAX 320 / HOS CAROUSEL**

THIS DRAWING, DESIGN CONCEPT AND SPECIFICATIONS ARE THE PROPERTY OF HORNBEEK OFFSHORE SERVICES AND ARE FURNISHED ON A CONFIDENTIAL BASIS WITH AN EXPRESSED UNDERSTANDING THAT THEY WILL NOT BE COPIED IN ANY MANNER USED FOR MANUFACTURE, SOLD, TRANSFERRED, NOR USED TO THE DETRIMENT OF SAID FIRM WITHOUT WRITTEN PERMISSION. 1008 ©

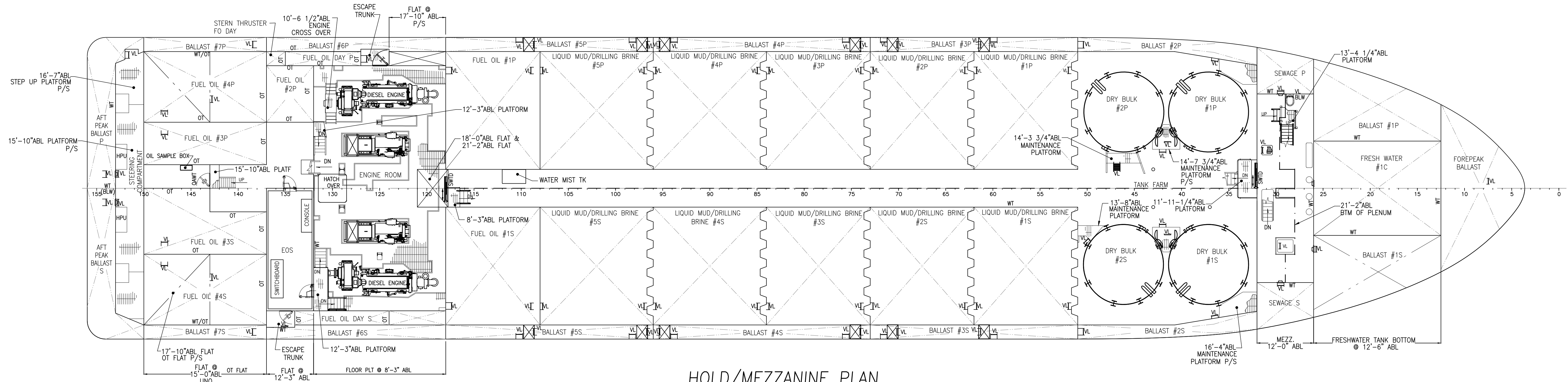
**HORNBECK OFFSHORE SERVICES**

DRAWN BY: A. RHODA	319'-6" X 64' X 24'-6"			SIZE D
CHECKED BY: M. STANSBURY	<b>OUTBOARD PROFILE &amp; GENERAL ARRANGEMENTS</b>			REV. 3
APPROVED BY: P. LUBRANO	TASK No. 7868	DRAWING No. 1.001	SCALE: AS NOTED DATE: 11/04/15	SHEET 1 OF 3

LAST SAVE/PRINT: 12/4/2024 3:02 PM  
 ENG: JSULLIVA  
 SHEET: ANSI D 22X34

D

D



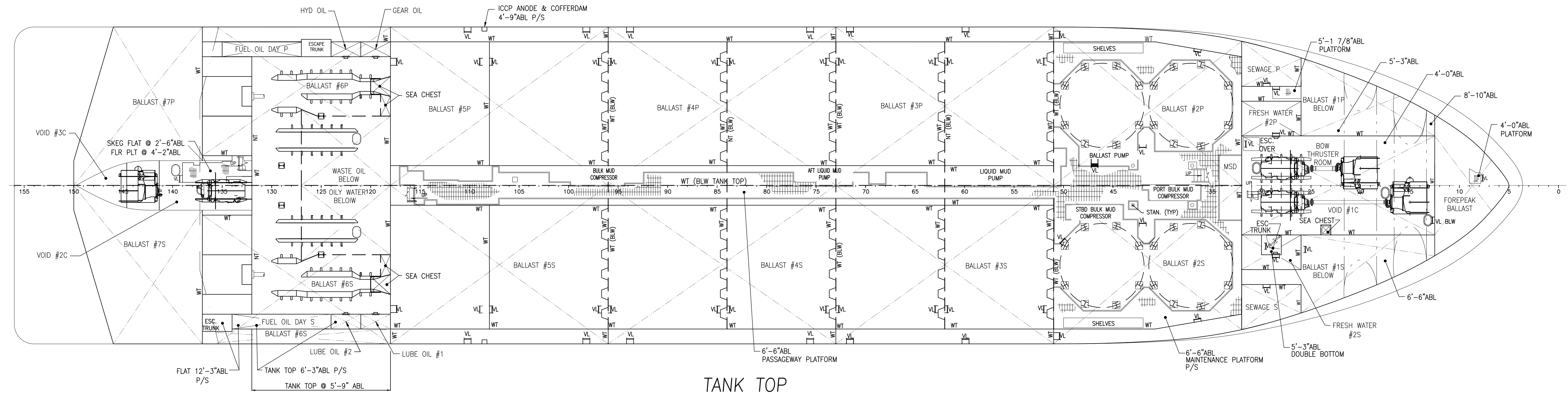
**HOLD/MEZZANINE PLAN**  
SCALE: 3/32"=1'-0"

C

C

B


B

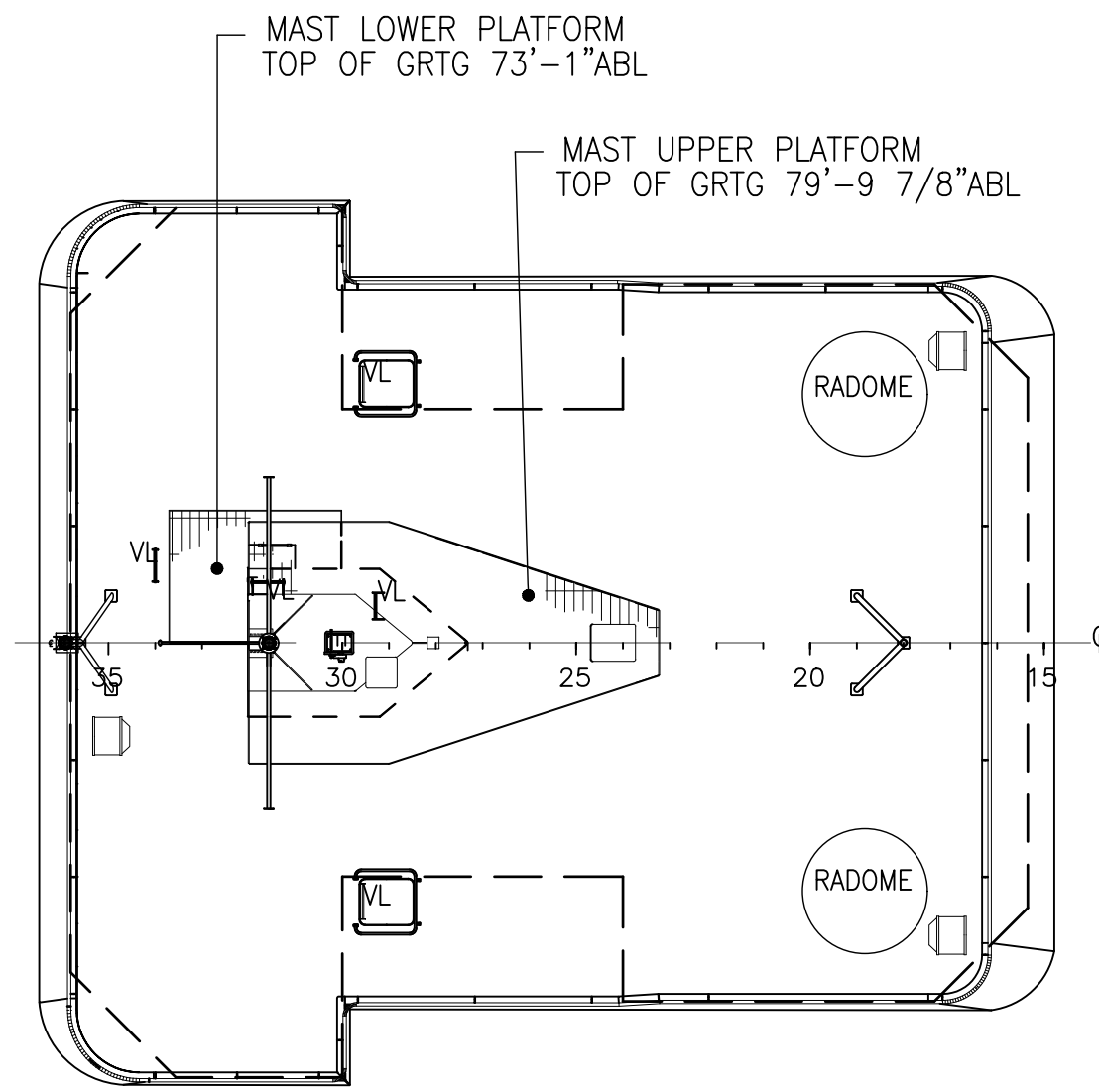


**TANK TOP**  
SCALE: 3/32"=1'-0"

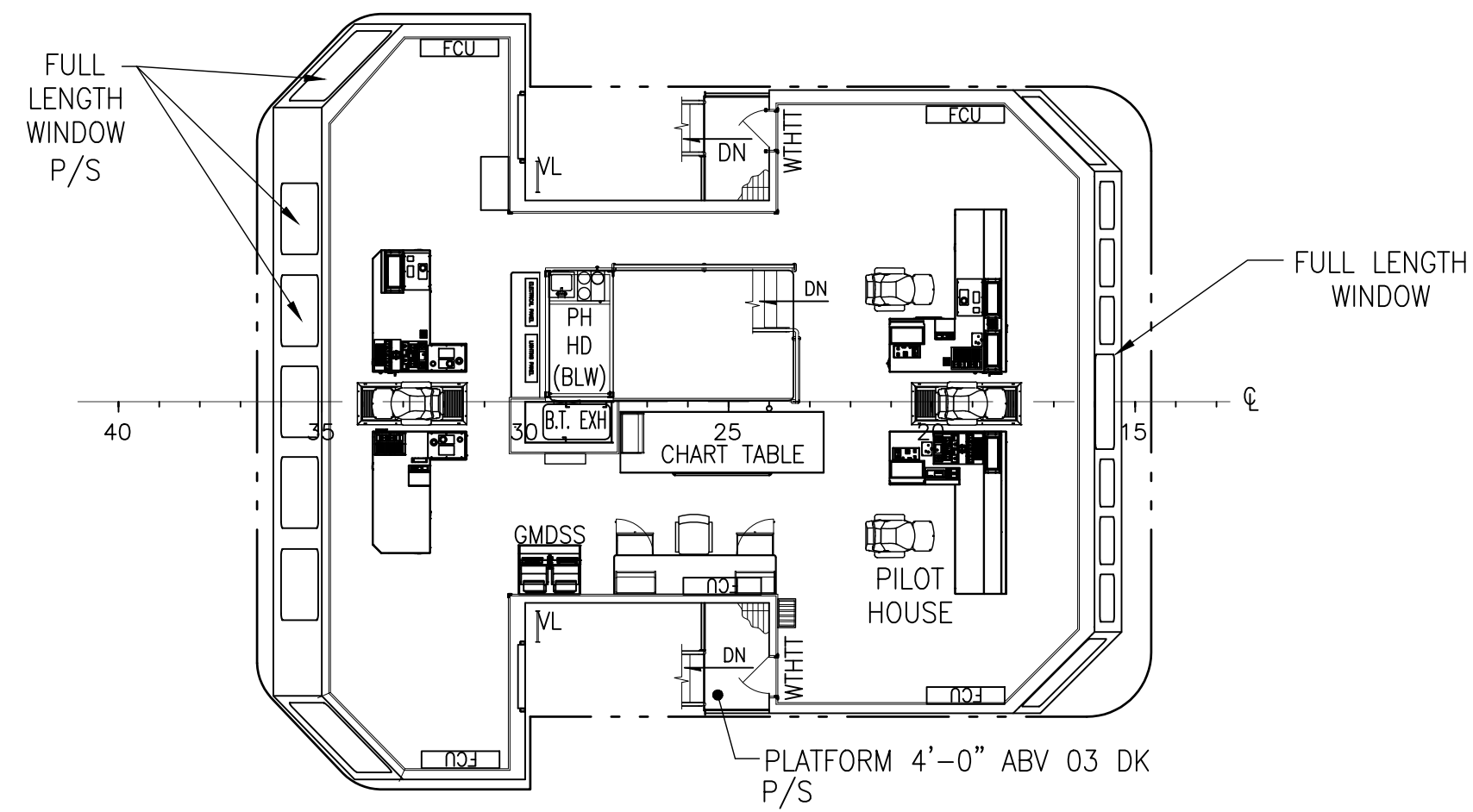
A

A

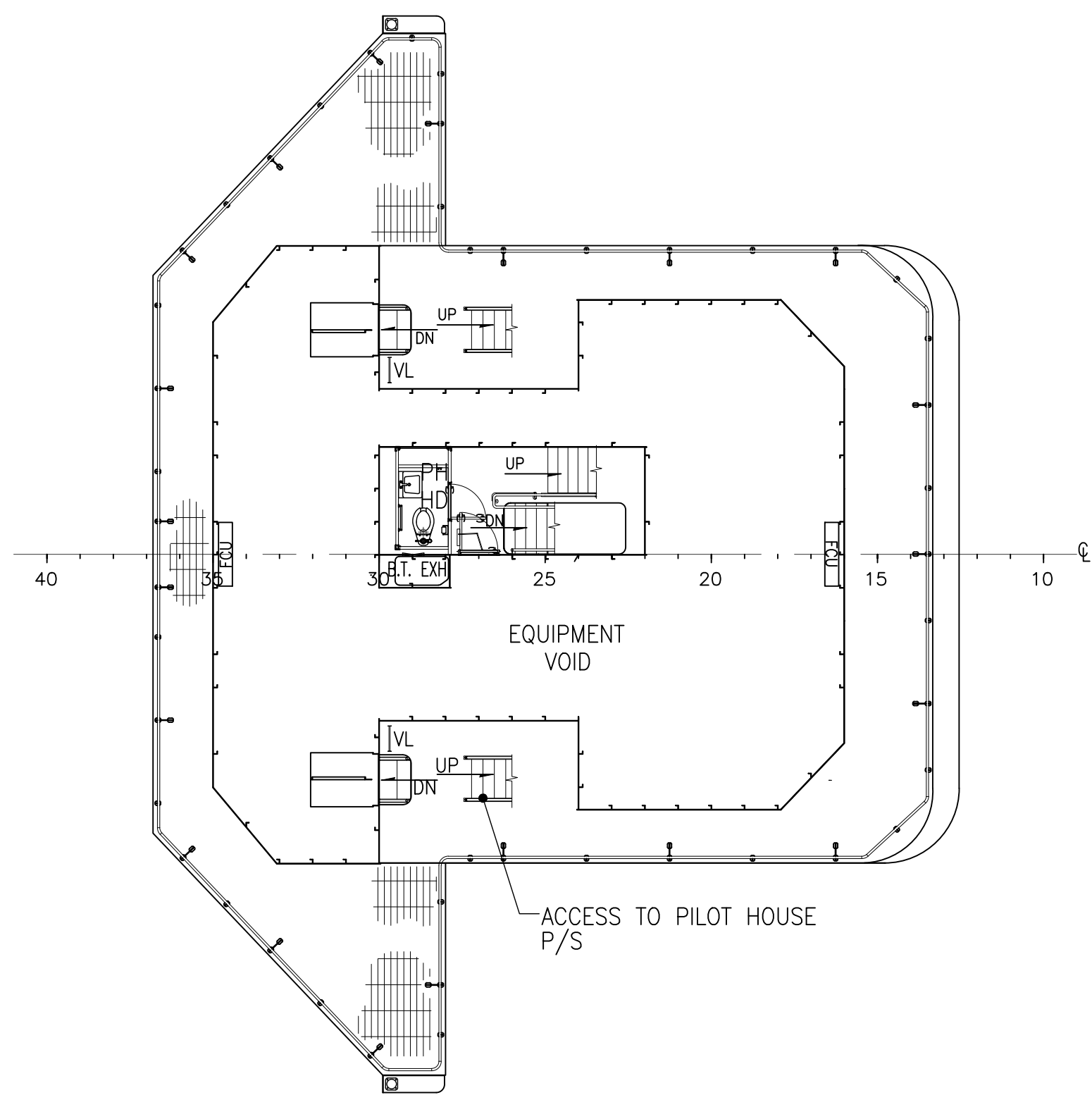
 <p>HORNBECK OFFSHORE SERVICES</p>	<p>THIS DRAWING, DESIGN CONCEPT AND SPECIFICATIONS ARE THE PROPERTY OF HORNBECK OFFSHORE SERVICES AND ARE FURNISHED ON A CONFIDENTIAL BASIS WITH AN EXPRESSED UNDERSTANDING THAT THEY WILL NOT BE COPIED IN ANY MANNER USED FOR MANUFACTURING, SOLD, TRANSFERRED, NOR USED TO THE DETRIMENT OF SAID FIRM WITHOUT WRITTEN PERMISSION.</p>		<p><b>OUTBOARD PROFILE &amp; GENERAL ARRANGEMENTS</b></p>	<p>SIZE D</p>
	<p>TASK No. 7868</p>	<p>DRAWING No. 1.001</p>	<p>SCALE: AS NOTED DATE: 11/04/15</p>	<p>REV. 3</p>
	<p>HULL No. 2016</p>	<p>SY: VTHM</p>	<p>SHEET 2 OF 3</p>	



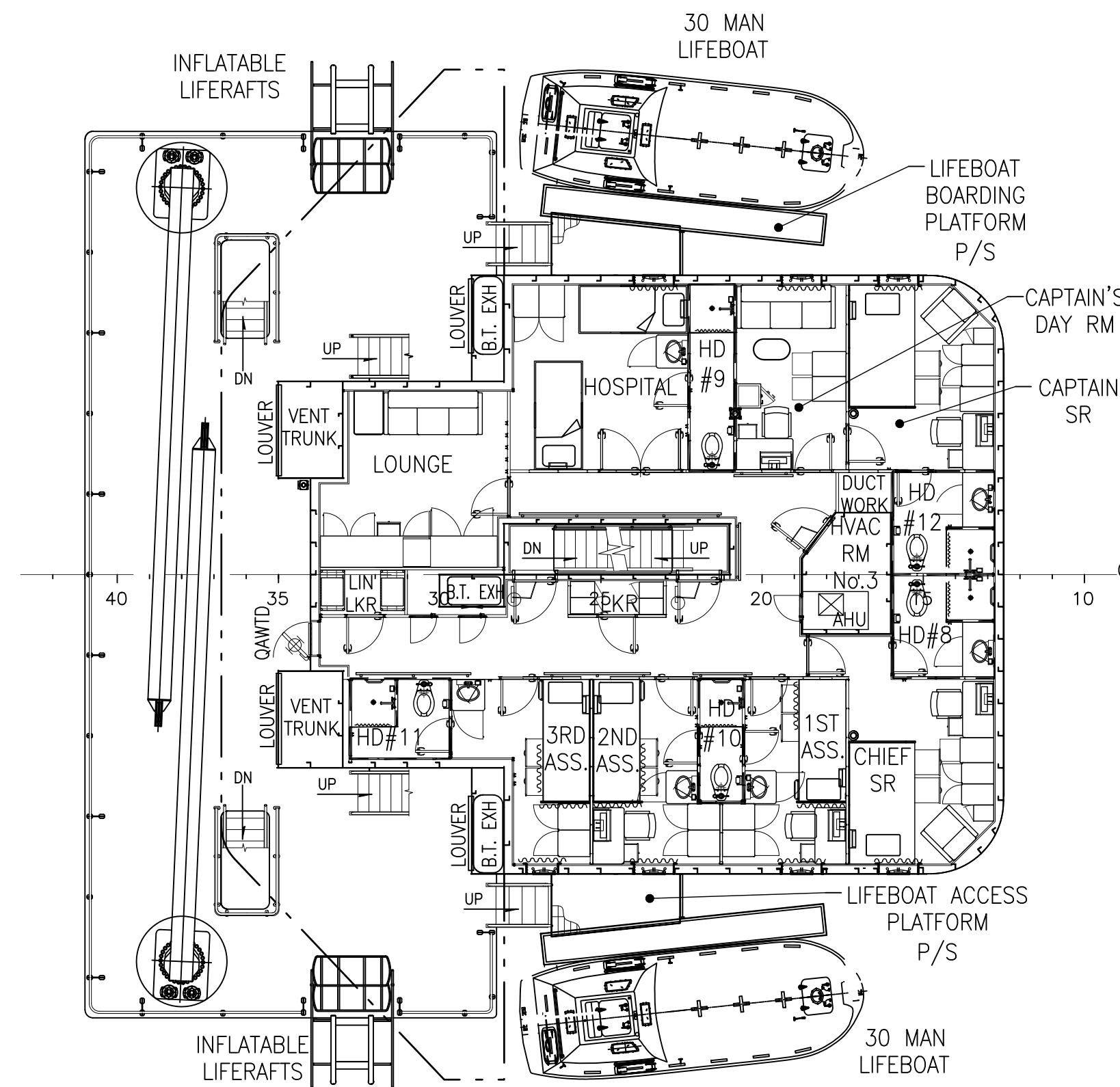
**PILOT HOUSE TOP**  
SCALE: 1/8"=1'-0"



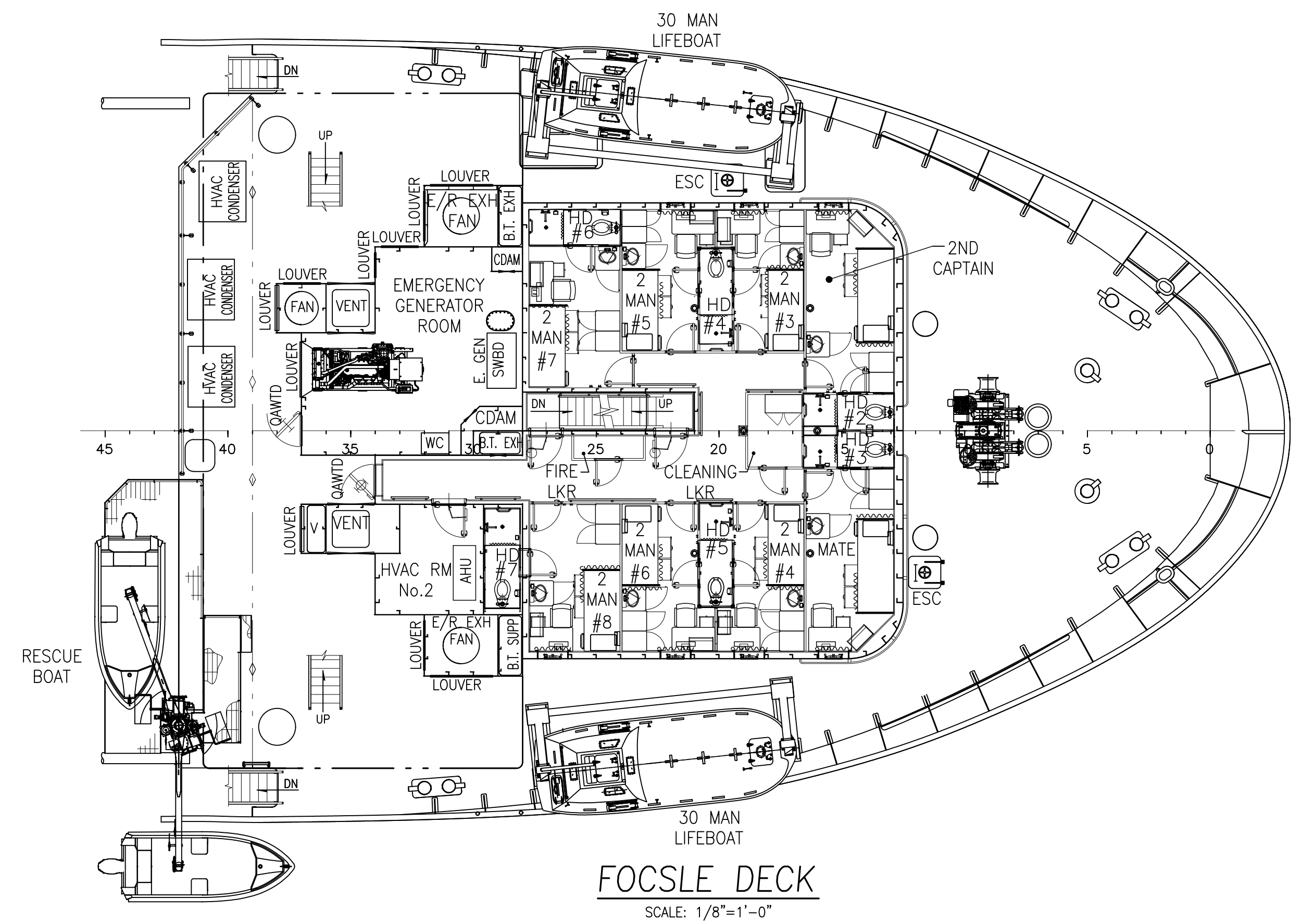
**PILOT HOUSE DECK**  
SCALE: 1/8"=1'-0"



**03 DECK**  
SCALE: 1/8"=1'-0"



**02 DECK**  
SCALE: 1/8"=1'-0"



**FOCSLE DECK**  
SCALE: 1/8"=1'-0"

	THIS DRAWING, DESIGN CONCEPT AND SPECIFICATIONS ARE THE PROPERTY OF HORNBECK OFFSHORE SERVICES AND ARE FURNISHED ON A CONFIDENTIAL BASIS WITH AN EXPRESSED UNDERSTANDING THAT THEY WILL NOT BE COPIED IN ANY MANNER USED FOR MANUFACTURING, REPRODUCTION, SALE, TRANSFERRED, NOR USED TO THE DETRIMENT OF SAID FIRM WITHOUT WRITTEN PERMISSION.			OUTBOARD PROFILE & GENERAL ARRANGEMENTS TASK No. 7868 DRAWING No. 1.001 HULL No. 2016 SY: VTHM	SCALE: AS NOTED DATE: 11/04/15 SHEET 3 OF 3	SIZE D
	REV.	3				