

05 DECK - WHEELHOUSE
TOP 67' - 10.5" ABL

04 DECK - WHEELHOUSE
58' - 10.5" ABL

03 DECK
54' - 10.5" ABL

02 DECK - ACCOMMODATION
45' - 11.75" ABL

01 DECK - FO'C'SLE
37' - 1" ABL

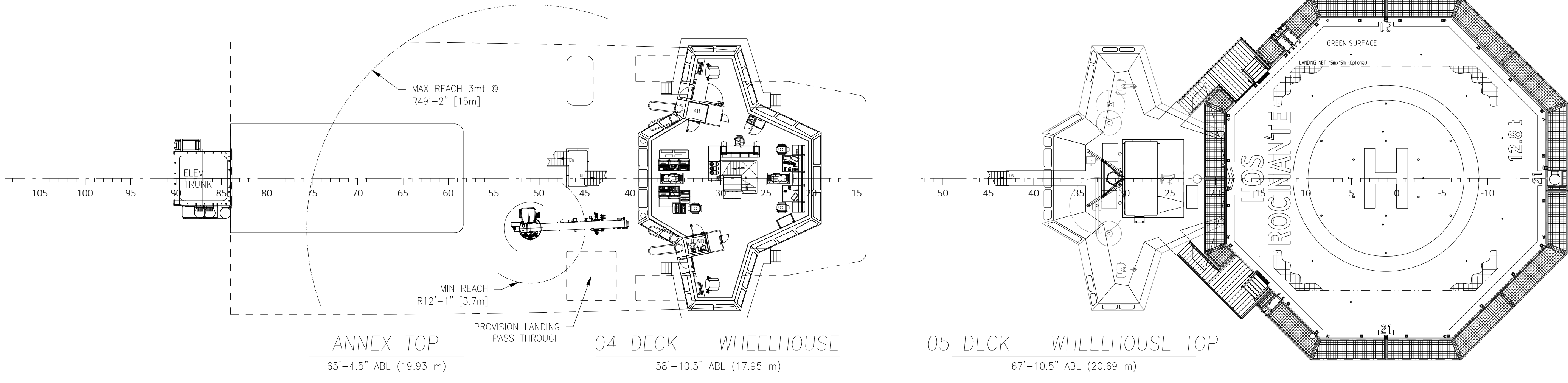
1 DECK - MAIN DECK
24' - 6" ABL

2 DECK - MEZZANINE
14' - 5" ABL

3 DECK - TANK TOP
4' - 0" ABL

BASELINE

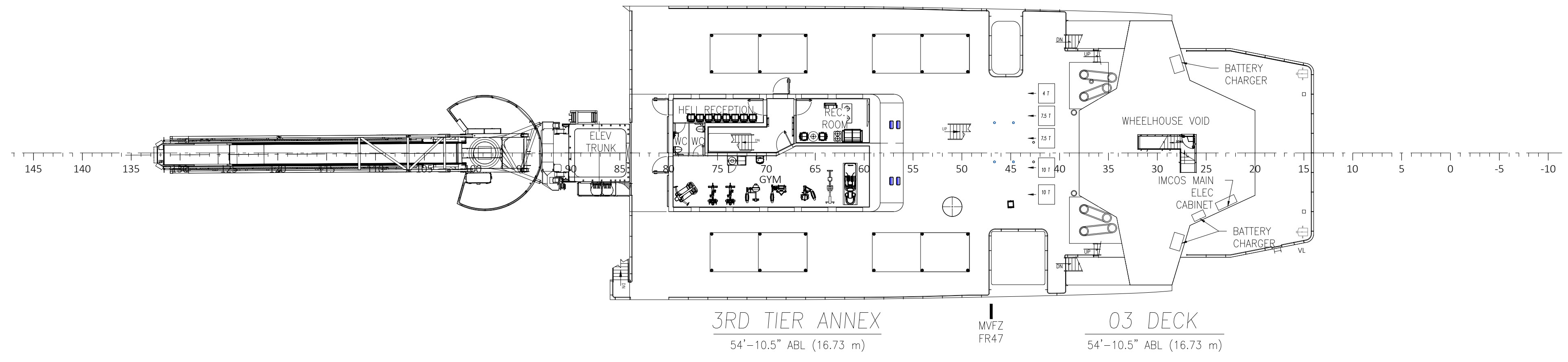
OUTBOARD PROFILE



ANNEX TOP 65'-4.5" ABL (19.93 m)

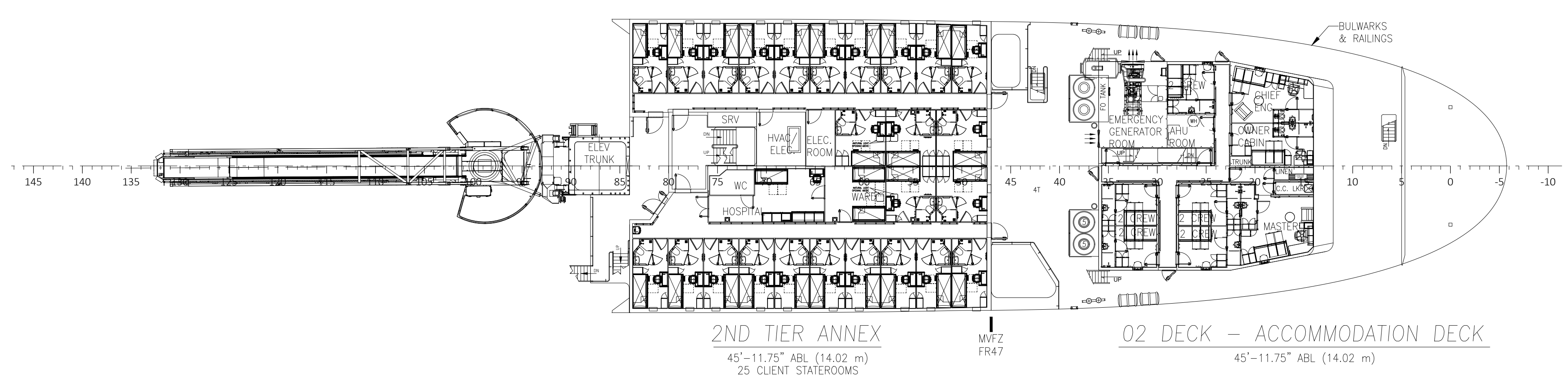
04 DECK - WHEELHOUSE 58'-10.5" ABL (17.95 m)

05 DECK - WHEELHOUSE TOP 67'-10.5" ABL (20.69 m)



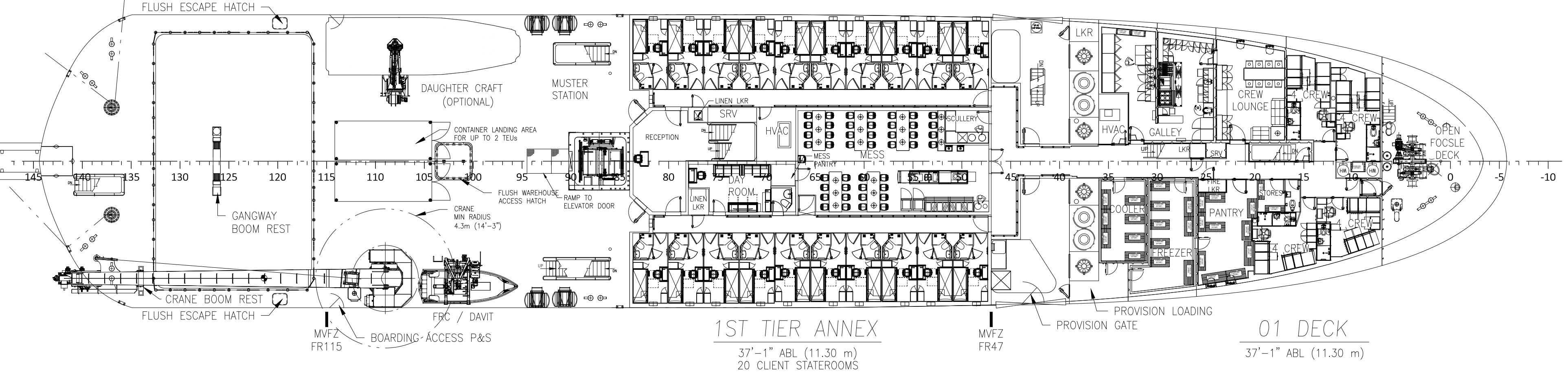
3RD TIER ANNEX 54'-10.5" ABL (16.73 m)

03 DECK 54'-10.5" ABL (16.73 m)



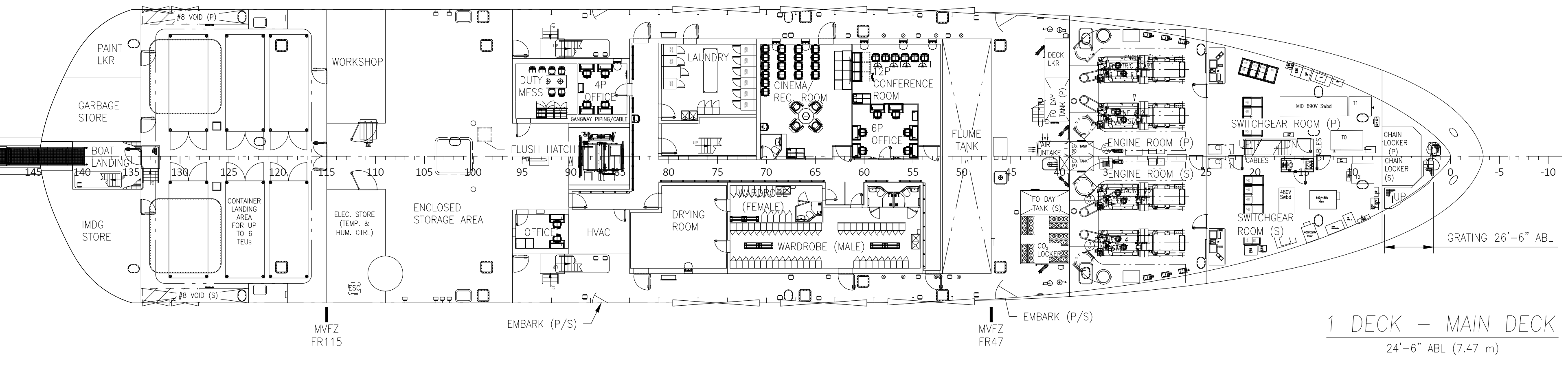
2ND TIER ANNEX 45'-11.75" ABL (14.02 m)

02 DECK - ACCOMMODATION DECK 45'-11.75" ABL (14.02 m)

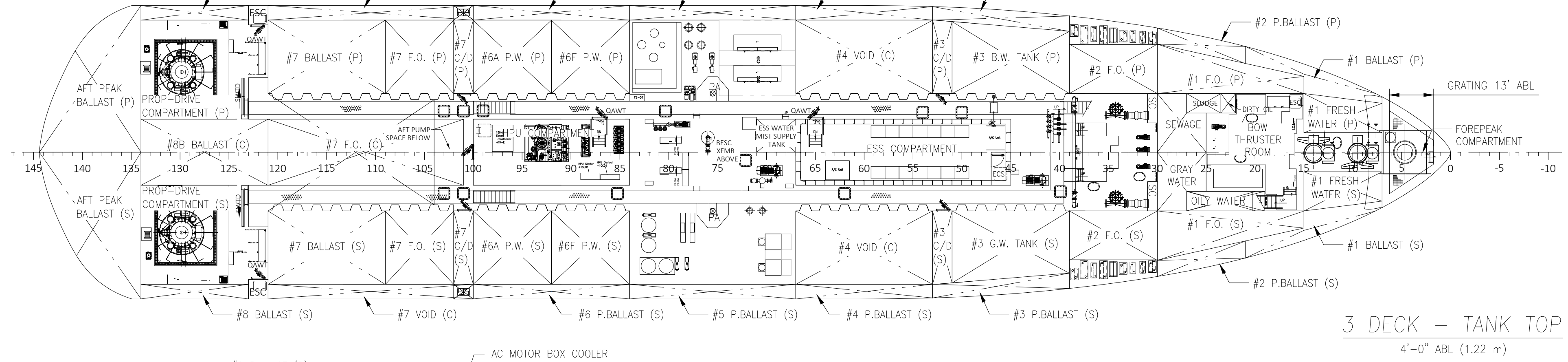


1ST TIER ANNEX 37'-1" ABL (11.30 m)

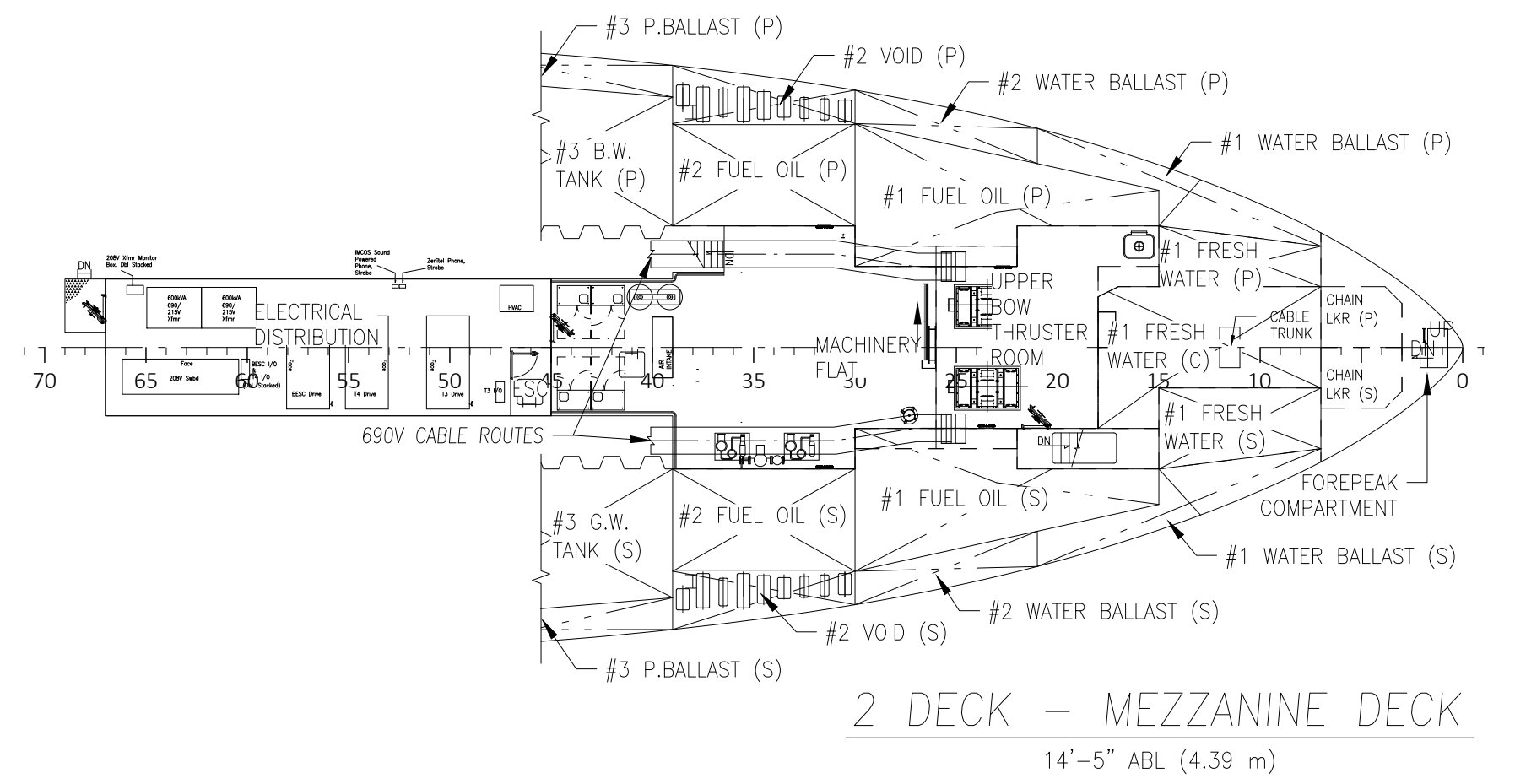
01 DECK 37'-1" ABL (11.30 m)



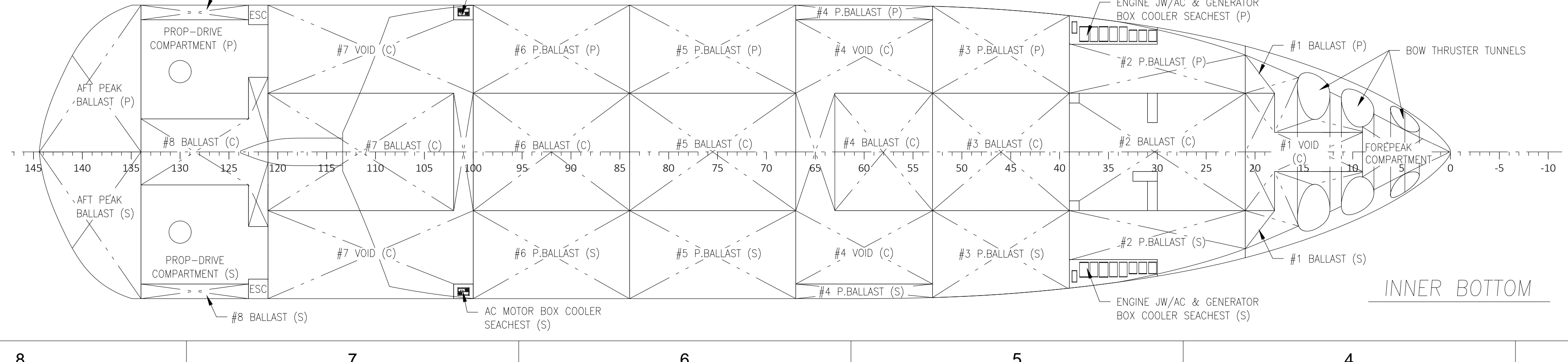
1 DECK - MAIN DECK 24'-6" ABL (7.47 m)



3 DECK - TANK TOP 4'-0" ABL (1.22 m)



2 DECK - MEZZANINE DECK 14'-5" ABL (4.39 m)



INNER BOTTOM

GENERAL NOTES

- CONTAINER SOCKETS PROVIDED ON ANNEX TOP FOR TEMPORARY STORAGE OF FOUR 10' OR 20' ISO CONTAINERS.
- ACTUAL DIMENSIONS AND VESSEL CONFIGURATION TO BE FIELD VERIFIED PRIOR TO FABRICATION AND INSTALLATION.

PRINCIPAL PARTICULARS

LOA	300'-5"
LWL	285'-4"
BEAM	60'-0"
DEPTH	24'-6"
LOADLINE DRAFT	19'-4"
OPERATING DRAFT	18'-0"
DECK LOAD RATING (01 DECK)	512 LB/FT ² (2.51/M ²)
(MAIN DECK)	1024 LB/FT ² (51/M ²)

REGULATORY USCG SUB 1 & L, SOLAS

NOTATIONS

ABS +A1, OFFSHORE SUPPORT VESSEL (WIND-SC)+AMS, DPS-2, ENVIRO, GP, +ACCU, ESS LIBRARY, HDC (5T/M²), UWILD, GRC (TYPE II-AS), CRC, HELDK, HAD (WB)

ACCOMMODATION PARTICULARS

TOTAL P.O.B	74/119
VESSEL CREW	29
CLIENT STATEROOMS	45 SOL/90 DBL
MESS CAPACITY	52
LOCKER ROOMS (MAIN DECK)	1 MALE, 1 FEMALE
GYM (CO-ED)	1

HOS CSOV 300E / HOS ROCINANTE

THIS DRAWING, INCLUDING BACKGROUND INTELLECTUAL PROPERTY RIGHTS OWNED BY VARD MARINE INC. AND VARD MARINE US INC. IS THE SOLE PROPERTY OF VARD MARINE INC. AND VARD MARINE US INC. IT IS TO BE USED ONLY FOR THE MANUFACTURE OF THE VESSEL DESCRIBED IN THIS CONTRACT AND IS NOT TO BE REPRODUCED OR TRANSMITTED IN ANY FORM OR BY ANY MEANS, ELECTRONIC OR MECHANICAL, INCLUDING PHOTOCOPYING, RECORDING, OR BY ANY INFORMATION STORAGE AND RETRIEVAL SYSTEM, WITHOUT THE WRITTEN PERMISSION OF VARD MARINE INC. OR VARD MARINE US INC.

HORNBECK OFFSHORE SERVICES

DRAWN BY:	SLH	300'-5" X 60'-0" X 24'-6"	SIZE
CHECKED BY:	TFP	GENERAL ARRANGEMENT	E
APPROVED BY:	RS	TASK NO. 7589/456	REV. 7,C
		DRAWING NO. 1.001	
		HULL No. 156	
		SCALE: 1/16" = 1'-0"	
		DATE: 05/16/2022	
		SHEET 1 of 1	